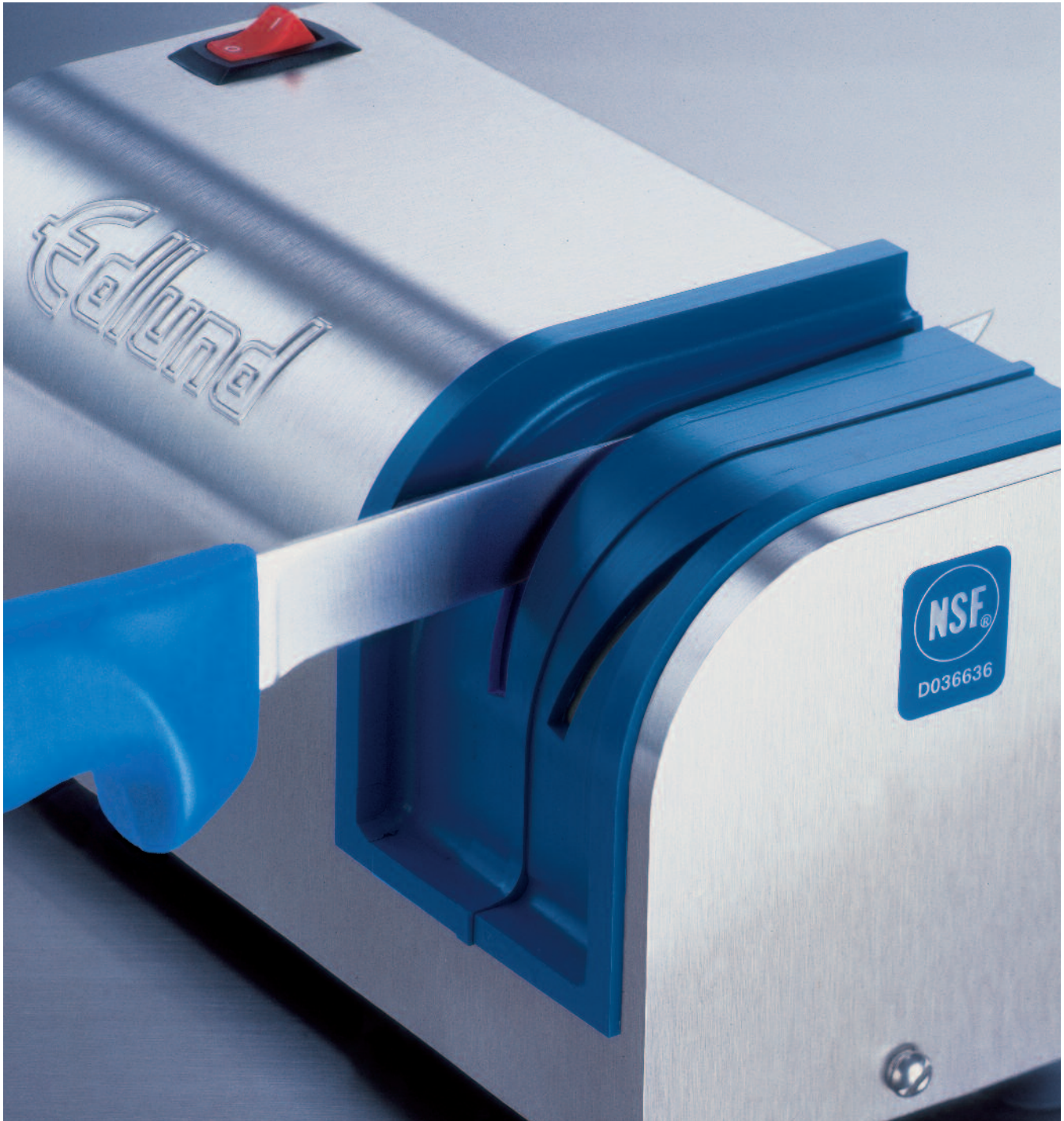


Edlund 401 NSF Certified Electric Knife Sharpener

Introducing Edlund's factory precise Model 401 Electric Knife Sharpener. The 401 was designed with the input of engineers from the market leader of professional cutlery. The result: a sharpener that recreates a factory fresh knife and maintains the integrity of the entire edge, tip to handle. The blade is not merely sharpened; it's restored each time as if the knife were new. **Another sharp idea from Edlund, of course!**

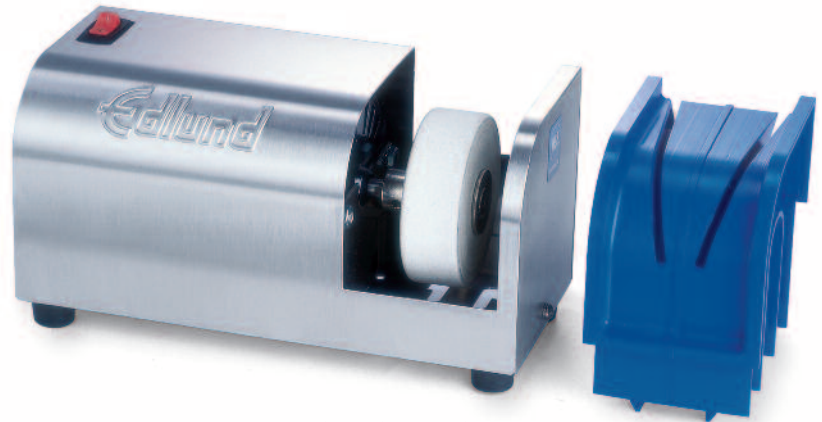


- Precision guidance system to help maintain a perfect edge
- ABS knife guide pops out for easier cleaning and ease of maintenance
- All stainless steel housing
- Newly engineered knife guide allows knife heel to be inserted closer to stone than previous models to maximize sharpening area
- Grinding wheel assembly is replaceable
- Sharpens knives from $\frac{3}{16}$ of an inch to cleaver blades. Also sharpens scalloped edge bread knives
- NSF Certified
- Made in USA

From sharper minds, come sharper products.



The NSF Certified Model 401 is so easy to use and clean you'll have factory fresh knives every shift, every day.



Model 401 shown with Easy-Track Guidance System removed for cleaning, or for replacement of grinding wheel.

FEATURES:

- Precision guidance system to help maintain a perfect edge
- ABS knife guide pops out for easier cleaning and ease of maintenance
- Newly engineered knife guide allows knife heel to be inserted closer to stone than previous models to maximize sharpening area
- Pressure sensitive motor shuts down automatically if too much pressure is applied, preventing burn or excess wear
- All stainless steel housing
- The Model 401 was designed with the input of engineers from the market leader of professional cutlery
- Grinding wheel assembly is replaceable
- Sharpens knives from $\frac{3}{16}$ of an inch to cleaver blades. Also sharpens scalloped edge bread knives
- Lighted rocker switch indicates when motor is running
- NSF Certified
- Made in USA

SPECIFICATIONS:

| MODEL # | DESCRIPTION | PRODUCT CODE | CASE CUBE FT ³ /M ³ | MASTER CASE | CASE WEIGHT LBS./KGS |
|---------|--|--------------|---|-------------|----------------------|
| 401 | NSF Electric Knife Sharpener with Guidance System 115 Volt | 40010 | 1.1/.03 | 3 | 31/13.9 |
| 401 | NSF Electric Knife Sharpener with Guidance System 230 Volt | 40099 | 1.1/.03 | 3 | 31/13.9 |
| 401 | Replacement Grinding Wheel Assembly | A526SSP | | 1 | 2/.9 |

Unit dimensions: 4" (102mm) deep by 4 $\frac{3}{4}$ " (121mm) high by 9 $\frac{3}{4}$ " (248mm) wide.



Edlund Company, Inc., 159 Industrial Parkway, Burlington, VT 05401, USA 800-772-2126 www.edlundco.com

WARRANTY INFORMATION: THE EDLUND COMPANY WARRANTS THESE PRODUCTS TO BE FREE FROM DEFECTS IN MATERIAL AND WORKMANSHIP FOR A PERIOD OF ONE YEAR FROM DATE OF PURCHASE. THE COMPANY'S OBLIGATION UNDER THIS WARRANTY IS LIMITED TO REPAIRING OR REPLACING WITHOUT CHARGE ANY PART OR PARTS FOUND TO BE DEFECTIVE UNDER NORMAL USE. IT IS THE RESPONSIBILITY OF THE PURCHASER TO RETURN THE ENTIRE UNIT TO THE FACTORY, TRANSPORTATION CHARGES PREPAID. THIS WARRANTY DOES NOT COVER PARTS THAT MUST BE REPLACED UNDER NORMAL USE, INCLUDING KNIVES AND DRIVE GEARS ON CAN OPENERS. NO OTHER WARRANTY, WRITTEN OR VERBAL, IS AUTHORIZED BY THE COMPANY. WARRANTY INFORMATION OUTSIDE THE UNITED STATES MAY VARY, CONSULT YOUR DISTRIBUTOR.

09/09 EDL-5106